



Rules and Regulations 2026

STIHL TIMBERSPORTS® is an international extreme sports competition series. Its roots lie in Canada, the United States, Australia and New Zealand, where workers in the timber industry would hold competitions to determine who was the fastest in a range of wood chopping and sawing disciplines that closely simulated their everyday work. These logging disciplines evolved with time into a series of sporting disciplines that require tremendous athleticism, strength, precision and power. Today the world's best Athletes compete in national and international events featuring three Axe disciplines and three sawing disciplines. Springboard, Underhand Chop and Standing Block Chop are the classic Axe disciplines; Single Buck (single-man cross-cut saw), Stock Saw (standard chainsaw) and Hot Saw (tuned, customized chainsaw) are the sawing disciplines. For more information visit: www.stihl-timbersports.com.

Sportsmanship

The success of the STIHL TIMBERSPORTS® Series depends on good sportsmanship, professionalism, tolerance, respect and fair play. The STIHL TIMBERSPORTS® Series takes a clear position against any form of racism or discrimination. Everyone associated with the STIHL TIMBERSPORTS® Series is expected to conduct themselves in a manner that reflects these values.

Unsportsmanlike conduct includes inappropriate audible or visual displays including political gestures to the general public or actions considered to be unfair or unsafe at any time. This includes intentionally disparaging or displaying the sponsors equipment, logos or brands in an unprofessional or unsafe manner to the public.

In addition, any infraction against the anti-doping rules of the [World Anti-Doping Agency \(www.wada-ama.org\)](http://www.wada-ama.org) will be penalized. The list of prohibited substances and methods can be found on the [WADA website](http://www.wada-ama.org).

The consumption of alcohol or any other illegal drugs for Athletes/ Assistants/ Helpers/ Team Captains is forbidden during the whole length of a competition (also if these persons are eliminated). Any infraction of this rule will result in an immediate disqualification from the whole competition.

The international STIHL TIMBERSPORTS® committee and STIHL subsidiaries can penalize Athletes or Teams for unsportsmanlike behaviour, dangerous behaviour or the break/ignoring of any safety rule that occurs during or outside of a STIHL TIMBERSPORTS® competition if it directly relates to a STIHL TIMBERSPORTS® organized and funded competition, training camp, national team travel, meeting, or the STIHL, STIHL TIMBERSPORTS®, or STIHL TIMBERSPORTS® sponsors' brands, branded products, and branded events. Penalties can include, but are not limited to fines or being banned from the Series.

During competition, the Judging Team may impose a penalty (individual competitions: -5 points or disqualification/ Team competitions and Trophies: -15 seconds or disqualification). This applies to Athletes, Helpers, Assistants, sponsors and national team representatives.

The Rules and Regulations are defined and updated by the international STIHL TIMBERSPORTS® committee in English. Translations into other languages are possible. However, in case of disputes the English version will take precedence.

All changes in the Rules & Regulations from the 2025 season to the 2026 season are marked in yellow.



Table of Content

1.	Competition rules	6
1.1	General rules for all disciplines	6
1.1.1	Basics	6
1.1.2	Disqualification	6
1.1.3	Persons on the competition stage	7
1.1.4	Safety/ Medical Precautions	7
1.1.5	Time	8
1.1.6	Time limits for disciplines	8
1.1.7	Start Heat and Preparation Time	8
1.2	Chopping disciplines	9
1.2.1	Spare Axe and Axe boxes	9
1.2.2	Striking of block	9
1.2.3	Wrenching	9
1.2.4	Slabbing	9
1.2.5	Springboard	11
1.2.6	Standing Block	12
1.2.7	Underhand	12
1.3	Sawing Disciplines	12
1.3.1	Stock Saw	12
1.3.2	Single Buck	13
1.3.3	Hot Saw	14
1.3.4	Intermediate Hot Saw	15
1.4	Hot Saw - Technical Rules	16
1.4.1	Pro Hot Saw	16
1.4.2	Intermediate Hot Saw	16
2.	Trophy	17
2.1	General Rules	17
2.2	Stock Saw	18
2.3	Underhand	18
2.4	Single Buck	18
2.5	Standing Block	18
2.6	Stage Setup	19

STIHL

TIMBERSPORTS®

THE ORIGINAL EXTREME SPORT

3.	Competition formats	20
3.1	Traditional individual competition format	20
3.1.1	Order of the disciplines.....	20
3.1.2	Allocation of points.....	20
3.2	Individual round format	20
3.2.1	Order of the disciplines.....	20
3.2.2	Allocation of points.....	21
3.3	Rookie and Women competitions	22
3.3.1	Order of the disciplines.....	22
3.3.2	Allocation of points.....	23
3.4	Rookie World Championship	23
3.4.1	Order of the disciplines.....	23
3.4.2	Allocation of points.....	23
3.5	Intermediate competitions	24
3.5.1	Order of the disciplines.....	24
3.5.2	Allocation of points.....	24
3.6	Team competitions.....	24
3.6.1	Basics	24
3.6.2	Order of the disciplines.....	25
3.6.3	Time.....	25
3.6.4	Wood	25
3.6.5	Team members	26
3.6.6	Time Trial.....	26
3.7	Trophy format	26
3.7.1	Basics	26
3.7.2	Heat Procedure.....	27
3.7.3	Time Trial.....	27
3.8	Hot Saw Showdown	28
3.8.1	Basics	28
3.8.2	Heat Procedure.....	29
3.8.3	Time Trial.....	29
3.9	Tie Breakers.....	29
3.9.1	Individual format for Pros, Intermediate, Rookies and female competitions.....	29
3.9.2	Team.....	29
3.9.3	Trophy format	29
3.9.4	Hot Saw Showdown	29

STIHL TIMBERSPORTS®

THE ORIGINAL EXTREME SPORT

3.10	Best Axe / Saw Man / Woman	30
3.11	Gender	30
3.12	Levels	30
3.12.1	Pro	30
3.12.2	Rookie and Intermediate	30
3.12.3	Female Pro	30
3.12.4	Female Rookie and Intermediate	31
4.	Qual ification systems	32
4.1	National Championships	32
4.2	Individual World Championship	32
4.2.1	Host country, Australia, New Zealand and North America	32
4.2.2	Europe	32
4.3	World Trophy	33
4.3.1	Australia, New Zealand and North America	33
4.3.2	Europe	33
4.4	Rookie World Championship	34
4.4.1	Australia, New Zealand and North America	34
4.4.2	Europe	34
5.	Organisational rul es	36
5.1	Appeal Process for Athletes	36
5.2	Judges' Review	36
5.3	Assistants and Helpers	36
5.4	Eligibility	37
5.4.1	The minimum age of an Athlete using an Axe or a Single Buck	37
5.4.2	The minimum age of an Athlete using a chainsaw	37
5.4.3	Athletic Eligibility	37
5.4.4	Non eligible Athletes	37
5.5	Dress Code	37
5.5.1	General	37
5.5.2	Sponsor logos	38
5.6	Mandatory Dates: shootings and media dates	40
5.7	Citizenship	40
5.8	Organisational Competition Rules	40
5.8.1	On Deck Area	40

STIHL TIMBERSPORTS®

THE ORIGINAL EXTREME SPORT

5.8.2	After a Heat	40
5.9	Safety Distances	41
6.	Wood	42
6.1	Wood Diameters	42
6.1.1	Individual Pro Competitions	42
6.1.2	Rookies	42
6.1.3	Female	43
6.1.4	Intermediate	43
6.1.5	Trophy Format	43
6.1.6	Team	44
6.2	Spare Blocks and Straight Cuts	44
6.3	Drawing for Wood	44
6.4	Test Wood	44
6.5	Markings for wood	45
7.	Timing	46
7.1	Video and Timing System	46
7.1.1	Timing-System	46
7.1.2	Video-System	46
7.2	Starting Cadence	47
7.2.1	Axe disciplines and Single Buck	47
7.2.2	Stock Saw, Hot Saw, Trophy and Team Format	48
7.3	Timekeepers	48
7.4	Records	49
7.4.1	General Rules for achieving records	49
7.4.2	World Records	49
7.5	Doping	49
7.5.1	Doping Rules	49
7.5.2	Alcohol	49
7.5.3	Consequences of the violation of anti-doping rules	49
7.5.4	Medication	50
8.	Officials	51
8.1	Judges	51
8.2	Global Sports Director(s)	51



9. Definitions..... 52



1. Competition rules

1.1 General rules for all disciplines

1.1.1 Basics

- No Athlete may be physically assisted by any other person or aided using any technical devices (e.g. by a communication tool) during the disciplines.
 - Except the competition tools (Axes, Single Bucks, Springboard planks and Hot Saws) no other tools are allowed on stage (e.g. screwdrivers or nails).
 - Any type of constructed equipment to assist the performance of the disciplines are also prohibited. This does not apply to equipment provided by the organisation.
 - It's allowed to have lubricant (under 100ml), chalk on deck if it fits into a pocket or under the stand. Sprays are not allowed on deck.
- Athletes may remove bark, loose fragments of wood or embedded grit from competition wood blocks, however this must be under the supervision of either a Judge or a Global Sports Director.
- Athletes are responsible for the proper and secure mounting of the blocks to the stands and marked lines. The moment the Athlete starts their heat, they accept the wood, stand and their slabbing screws as they are.
- Athletes that interfere in any way another Athletes' / Teams' wood may be penalized (disqualification or sportsmanship penalty). This rule also applies for test wood.
- An Athlete's equipment must remain in their side of the stage throughout the heat, including during preparation.
- Athletes who interfere with other Athletes' / Teams' in the performance of their discipline will be disqualified.
- The Judge will blow a whistle to signal the end of the heat. It is at the Judges' discretion to allow an Athlete to continue to compete after the whistle. If there is any doubt as to whether the Athlete is finished with the discipline it is the Athlete's responsibility to indicate to the Judge that they wish to continue before the whistle blows.
- The Athletes are not allowed to leave their stands until all Athletes are finished with their heats.
- No Athlete is allowed to leave the deck during a running heat.
- No Athlete gets a second chance unless the Judge determines that the Athlete has been unintentionally wronged.
- There will be no monetary reward or points earned if a competitor does not compete.
- Results of the competition are final in the moment the allowable time for an appeal is exhausted. The only exception is because of unsportsmanlike behaviour.

1.1.2 Disqualification

- Indication of disqualification for any infraction will be made to the Athlete concerned at the end of the heat or after review of the video by the Judge.
 - Individual competitions: If Athletes are disqualified they will receive 0 points for that discipline.
 - Team competitions: If Athletes/ Teams are disqualified they will receive a fifteen seconds time penalty.



- Trophy: If Athletes are disqualified they will immediately be eliminated from the competition.

1.1.3 Persons on the competition stage

- No person other than the participating Athletes (or Assistants for Single Buck) may be on stage during competition.
 - An exception is made for all persons who are required for the production of the competition and its recording like e.g. camera operators or photographers.
- The Judge will clear the stage with the sounding of a whistle, prior to competition. The stage will remain clear until the whistle at the completion of the heat.
- The reserved Athlete area is for registered Athletes only, or other individuals as approved by the event organizer. No other individuals, including family members, will be allowed in this area.

1.1.4 Safety/ Medical Precautions

In the responsibility of the competing Athletes:

- For chopping disciplines foot- and leg-protection must be worn (including pre-competition wood preparations).
 - The leg protection must ensure that the entire front of the foot including top of the ankle joint and shinbone are protected and that there are no exposed areas.
- All Axe heads must be pinned and wedged. - For an axe to be considered pinned, the pin shall have passed through the wedge.
- Hearing Protection, Eye Protection and Chaps are required for the Athletes in the Hot Saw and the Stock Saw disciplines from the moment the Athlete proceeds to start the saw.
 - Personally supplied protective equipment must meet protective standards. Example: Regular glasses do not constitute protective eyewear.
 - Hearing Protection
 - It is not permitted to use any electronic devices as hearing protection or as a communication tool.
 - Any kind of hearing aid needs to be registered to the Judges prior to the competition.
 - Eye protection must fulfil at least the following safety standards: CE | EN 166 - Europe, UKCA - United Kingdom, ANSI Z87.1 - United States, CSA Z94 - Canada, AS/NZS 1337 Australia and New Zealand.
- In the responsibility of the organisation
 - Shields must be used in the front and back of the Athlete station for the Hot Saw discipline.
 - The event organisation will ensure appropriate safety precautions, such as safety distances and appropriate medical care.
 - In the event that an athlete is injured, the organisation will decide together with the responsible doctors, the GSDs (if present) and the athlete concerned whether he/she can continue the competition.



1.1.5 Time

Start and end

- The time starts with the word “Go”.
- Time stops when...
 - ... the last hit was made by the cutting edge of the Axe and the block is clearly severed.
 - or
 - ... the saw clearly severed the block.
- Any Athlete who starts before the start signal will be disqualified for this discipline.
- Do not touch the block until the Judge has determined that the block is completely cut.

1.1.6 Time limits for disciplines

- If an Athlete has not finished their cut when the time limit is reached the Judge will stop the competition and the Athlete will be disqualified for this discipline.
 - Time limits for finishing a heat are as follows:
 - Springboard = 2:30 min
 - Standing Block Chop, Underhand Chop = 1:30 min
 - Hot Saw, Stock Saw, Single Buck = 1 min
 - Team, Trophies = 2 min
 - These time limits are relevant for all categories.

1.1.7 Start Heat and Preparation Time

The organisation can apply following rule:

Once an Athlete has entered the competition stage, following preparation times will apply until the start cadence starts (start of the heat):

- Limit for preparation time until the start cadence starts:
 - Standing Block Chop, Underhand Chop = 30 seconds
 - Single Buck, Springboard = 1 minute
- Limit for preparation time until the warmup period for saws starts
 - Stock Saw, Hot Saw = 30 seconds
 - Team, Trophies = 1 minute
- The time starts when the Athletes step on stage.

Wood Diameters for all disciplines and levels are in chapter 6.1.



1.2 Chopping disciplines

1.2.1 Spare Axe and Axe boxes

Only one competition Axe and one spare Axe are approved. Axe boxes are not allowed on stage.

1.2.2 Striking of block

- An Athlete is not allowed to make any cut or mark with an Axe or other tools prior to the timed cutting of the block.
- The only exception is end-grain testing.

1.2.3 Wrenching

Wrenching (levering) is not allowed. You must finish the cut with a severing blow using the cutting edge of the Axe. See definition in chapter 9.

1.2.4 Slabbing

Standing Block and Underhand

Any Athlete who slabs shall be disqualified unless:

- The Athlete cuts the slab while still attached to the block while the block is still attached to the stand.

Or

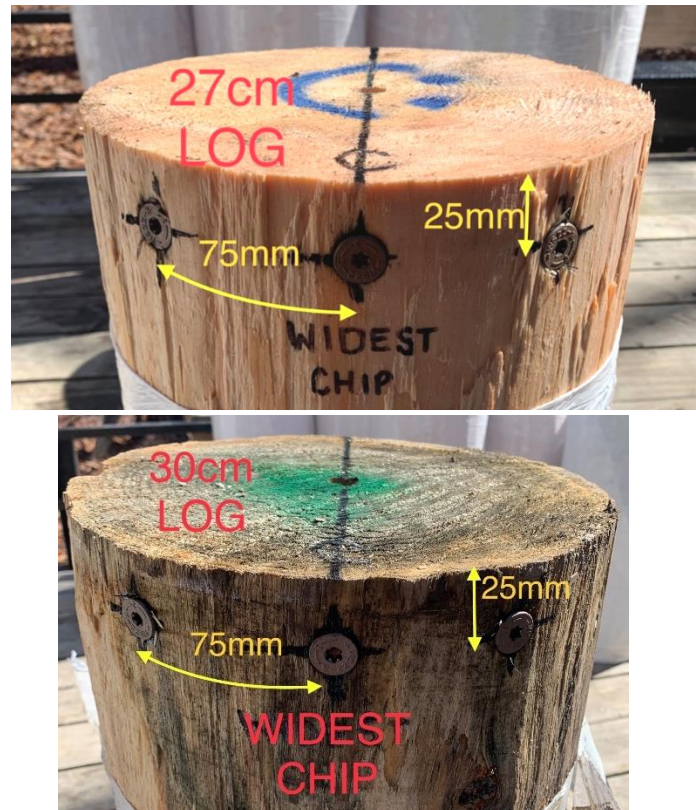
- The organisation places a minimum of twelve screws (Underhand) and a minimum of eight screws (Standing Block) are placed evenly around the circumference of the block.
- The screw must have following dimensions:
 - Length: between 110mm and 150mm.
 - Diameter: between 6mm and 9mm.
 - Screw head size: between 20mm and 25 mm.

Or

- Athletes place three screws on both sides of the block at the widest opening of the scarves.
 - Approx. 25mm from end of block (+/- 5 mm).
 - Approx. 75mm between w/1 screw on centre (+/- 5 mm).

STIHL TIMBERSPORTS®

THE ORIGINAL EXTREME SPORT



Any intentional slabbing will result in a disqualification regardless of the above.

Springboard

Any Athlete who slabs shall be disqualified unless:

- The Athlete cuts the slab while still attached to the block while the block is still attached to the stand.

Or

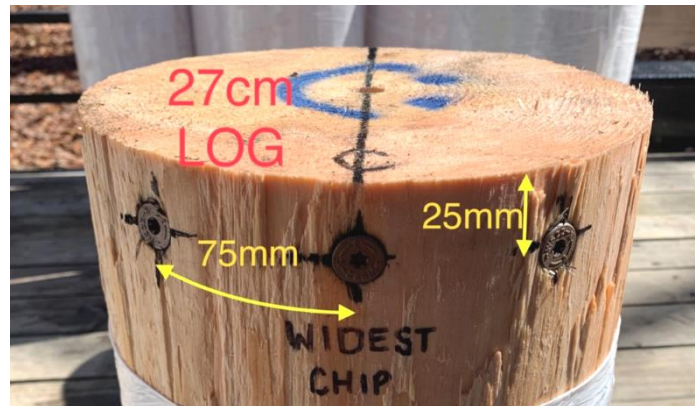
- The organisation places a minimum of six screws equally spaced around the circumference of the block on both the top and bottom.
- The screw must have following dimensions:
 - Length: between 110mm and 150mm.
 - Diameter: between 6mm and 9mm.
 - Screw head size: between 20mm and 25 mm.

Or

- Athletes place three screws on both sides of the block at the widest opening of the scarves.
 - Approx. 25mm from end of block (+/- 5 mm).
 - Approx. 75mm between w/1 screw on centre (+/- 5 mm).

STIHL TIMBERSPORTS®

THE ORIGINAL EXTREME SPORT



Any intentional slabbing will result in a disqualification regardless of the above.

1.2.5 Springboard

- No striking of the tree in any way prior to the discipline.
 - Exception: Peeling bark from the area where you will place your pocket is allowed - under supervision of a Judge or a Global Sports Director.
- Athletes need to use two “Springboards” to ascend to the top of the pole and chop a firmly attached block from the top of the pole.
 - Intermediate/Rookies: Athletes need to use one “Springboard” to ascend to the top of the pole and chop a firmly attached block from the top of the pole.
- Tape (provided by the event organizer) will be allowed under each pocket, nailing under the pocket is never permitted.
- Athletes cutting into or through existing board holes will be disqualified, unless under certain circumstances i.e., no more room on a given pole. The Judge must determine if the Athlete is allowed to move to another Springboard pole or “to climb” at the corner of an existing hole.
- The first hit from the top board will be an “up” hit.
- The block must be cut from two sides from the top board while still attached to the pole.
- Any uncut wood must be severed while the block is still attached to the pole for the Athlete to receive a time.
- The area around the Springboard pole must be kept clear, except weights (without edges) to secure Springboards approved by the Judges.
 - Any form of nails or screws are not permitted to secure the springboards.
- Height
 - Pro Division: 274cm
 - Intermediate/Rookie Division: Springboard with one board have a height of 180cm.

Helpers

- A Helper is allowed to bring the springboards on deck and hand them over to the athlete.
- A Helper is not allowed to assist in placing weights (for holding the springboards).
- In case the organisation provides braces, the Helper is not allowed to fix a brace or to mark the pole for it.



1.2.6 Standing Block

- The first hit will be an “up” hit.
- The block must be cut from two sides.

1.2.7 Underhand

- The block must be cut from two sides.
- The Athlete is not allowed to hit the block while touching the ground.
- Any Athlete cutting through a foothold shall be disqualified.
- The Athlete is not allowed to touch the block until the Judge has determined that the block is completely cut.
- Athletes are permitted to place ‘foot holds’ on the wood for a more stable hold on the block.
 - This procedure may only be carried out by the competing athlete/team. A rule break can result in a maximum penalty of a DQ.
 - In some competitions (e.g. Trophy or Team) the organization will cut the tops of from blocks for all athletes/teams. The organization will communicate the process to the competition.

1.3 Sawing Disciplines

1.3.1 Stock Saw

- Two cuts must be performed by the Athlete in the following order, one down cut, then one up cut. If additional cuts are attempted, they may be made in either direction. Two complete disks are required.
- The wood will be marked with a line drawn around the entire block, 10cm in from the end of the block (Team competitions: 5cm). If the line is completely severed or the Athlete cuts on the other side of the line the Athlete is disqualified.
- The first 10 cm of each block will be removed by the crew before the event to allow visual inspection and ensure fair conditions. Any knots beyond this point are considered luck of the draw unless unusually large defects are identified, as determined by the Judges or Global Sports Directors.
- After the Judge gives the signal “Warm up your saw!” the Athletes have 15 seconds to warm up their saws until the Judge gives the start signal.
- Stock Saw warmup procedure and protocol.
 - When starting the saw it needs to be secured at three places (handlebar, starting cord and at the rear).
 - All methods used by the athletes to start the saw need to be safe.
 - Starting the saw in an unsafe manner (i.e. drop start) will result in a disqualification.
 - The saw(s) can be started as follows.
 - On the ground
 - Place the chainsaw securely on the ground - assume a steady stance - the saw chain must not touch any objects or the ground.
 - With a hand on the handlebar, press the chainsaw firmly against the ground - thumb wrapped around the handlebar.



- Step into the rear handle with the foot or step on the rear hand guard with the heel of the foot.
 - Between the knees or thighs
 - Clamp the rear handle between the knees or thighs.
 - Grip the handlebar firmly with a hand - thumb wrapped around the handlebar.
 - If after three pulls the saw has not started the Athlete may turn the saw over to the designated technician by giving a signal to the Judges.
- Both hands must always be on the two handles when the throttle trigger lockout is depressed.
- The saws will be left running at the end of the warmup period, and the Athlete's hands must be resting on the top of the block until the start signal.
- The Athlete's hands must be placed in such a way so that four fingers (except the thumb) of each hand break the plane of the line drawn longitudinally down the centre of the block.
- If the saw shuts off after the Athlete touches it, they can restart it and finish the cut and then turn it over to the saw technician who will determine if the saw is still working correctly.
 - If the saw is determined to be in working order, then the Athlete's time stands.
 - If the saw is determined to be malfunctioning, a new saw will be provided, and the Athlete will be granted a re-cut.

Technical Rules for Stock Saw

- The event organizer will provide all chainsaws for this discipline.
 - It is mandatory to use STIHL MotoMix or STIHL MotoMix Eco.
 - STIHL MS661 C-M with a 50cm bar and a RS chain will be used for this event.
 - Possible combination of bars and chains
 - Bar: Rollomatic ES Light, 50cm, 3/8", 1,6 mm; chain: 3/8" Rapid Super, 1,6 mm
 - Bar: Rollomatic ES Light, 50cm, 3/8", 1,3 mm; chain: 3/8" Rapid Super, 1,3 mm
 - The organisation needs to make sure that the same combination of bars and chains is used for all Athletes in a competition or ranking.
 - The Stock Saws will be checked (rpm check) by a STIHL designated technician.
 - Athletes may draw for their saw prior to their heat.
 - One piece of carpet, one pad (not folded), or saw holder provided by the event organizer, may be used to place under the saw.

1.3.2 Single Buck

- Exact measurements of starting cut are in 6.1.
- 4cm width of wood are given to make the cut.
- The cookie must be complete or the Athlete gets a disqualification.
- No Athlete is allowed to use a counterweight on the opposite end of the Single Buck.
- The Athlete is allowed to make a starting cut.
 - Individual and Team competitions: 30cm arc starting cut
 - Rookies, Intermediate and female competitions: 25 cm arc starting cut.



- For Trophy format: 35 cm arc starting cut.
- Athletes may question the location of the starting cut. An alternative location for the starting cut will be decided by the Judge. Knots encountered thereafter will be considered luck of the draw.
- To use a spray for lubrication is allowed only backstage prior and after a heat.

Helpers/ Assistants

- A Helper is allowed to bring the saw on deck, place it under the corresponding block and open the box.
- Pro/Trophy: The Helper is not allowed to help the Athlete with the starting cut.
- In all it's not allowed to have an assistant to wedge and spray during the cut.
- Since the 2025 season, the previous rules also apply to women's competitions.

1.3.3 Hot Saw

- The following rules in 1.3.3 are valid for the Pro Hot Saw competition and the Intermediate Hot Saw competitions.
- The minimum age for Hot Saw is 18 years.
- Three cuts must be attempted in the following order: one down cut, one up cut, one down cut.
 - Three complete disks are required.
 - If additional cuts are attempted, they may be made in either direction.
- Before doing the actual cut, the Athletes have the chance to warmup his saw in a period of 60 seconds.
- While the saw is running must be pointed in a safe direction (between the span of the safety screens). Pointing the saw outside the safety screens is unsafe behaviour and will result in a disqualification.
- The saw will be shut off at the end of the warmup period and the Athletes' hands must be resting on the top of the block when the start signal is given.
 - The Athletes' hands must be placed in such a way that four fingers (not the thumb) of each hand break the plane of the line drawn longitudinally down the centre of the block.
- A second chance will be allowed for Hot Saws provided by the event organizer only if the tank is empty or parts fall off the saw (except the chain). Only the Athlete is allowed to start the Hot Saw in the warmup period during the competition.
 - No second chance will be allowed for private owned Hot Saws.
- The wood will be marked with a line drawn around the entire block, 15 cm in from the end of the block.
 - If the line is completely severed or the Athlete cuts on the other side of the line the Athlete is disqualified.
- The first 10 cm of each block will be removed by the crew before the event to allow visual inspection and ensure fair conditions. Any knots beyond this point are considered luck of the draw unless unusually large defects are identified, as determined by the Judges or Global Sports Directors.
- An Assistant is not permitted to assist the Athlete while competing.
 - Helpers are allowed only to come on deck with the consent of a Judge or the organisation. This includes the 60 second warmup period.



1.3.4 Intermediate Hot Saw

- Three cuts must be attempted in the following order: one down cut, one up cut, one down cut.
 - Three complete disks are required.
 - If additional cuts are attempted, they may be made in either direction.
 - The saw(s) can be started as follows.
 - On the ground
 - Place the chainsaw securely on the ground – assume a steady stance - the saw chain must not touch any objects or the ground.
 - With a hand on the handlebar, press the chainsaw firmly against the ground – thumb wrapped around the handlebar.
 - Step into the rear handle with the foot or step on the rear hand guard with the heel of the foot.
 - Between the knees or thighs
 - Clamp the rear handle between the knees or thighs.
 - Grip the handlebar firmly with a hand – thumb wrapped around the handlebar.
 - If after three pulls the saw has not started the Athlete may turn the saw over to the designated technician by giving a signal to the Judges.
- Both hands must always be on the two handles when the throttle trigger lockout is depressed. Before doing the actual cut, the Athletes have the chance to warmup his saw in a period of 15 seconds.
- While the saw is running the saw must be pointing in a safe direction (as designated by the Judge).
- The saw will be shut off at the end of the warmup period and the Athletes' hands must be resting on the top of the block when the start signal is given.
 - The Athletes' hands must be placed in such a way that four fingers (not the thumb) of each hand break the plane of the line drawn longitudinally down the centre of the block.
- A second chance will be allowed for Hot Saws provided by the event organizer only if the tank is empty or parts fall off the saw (except the chain). Only the Athlete is allowed to start the Hot Saw in the warmup period during the competition.
 - No second chance will be allowed for private owned Hot Saws.
- The wood will be marked with a line drawn around the entire block, 15 cm in from the end of the block.
 - If the line is completely severed or the Athlete cuts on the other side of the line the Athlete is disqualified.
- An Assistant is not permitted to assist the Athlete while competing.
- If the saw shuts off after the Athlete touches it, they can restart it and finish the cut and then turn it over to the saw technician who will determine if the saw is still working correctly.
 - If the saw is determined to be in working order, then the Athlete's time stands.
- If the saw is determined to be malfunctioning, a new saw will be provided and the Athlete will be granted a re-cut.
- A second chance will be allowed for Hot Saws provided by the event organizer only if the tank is empty or parts fall off the saw (except the chain). Only the Athlete is allowed to start the Hot Saw in the warmup period during the competition.



1.4 Hot Saw - Technical Rules

1.4.1 Pro Hot Saw

- The Hot Saw will be of the Athletes' choice.
- The Athletes need to be able to carry the saw by themselves.
- The saws are limited to one cylinder and need a tuned exhaust.
 - If a rotary engine is used, the saw can have one disc only.
- All Hot Saws must have one chain-catcher above the bar.
 - For clarity: Provided Hot Saws must have a chain catcher and the device must not be changed by the Athlete.
 - The bottom chain catcher is strongly recommended by STIHL for safety reasons but remains optional on personal Hot Saws.
- STIHL recommends for safety reasons a metal plate under the "throttle hand". For more information get in contact with the Global Sports Director(s).
- A chain cover and a rotor cover must be installed on all saws.
- STIHL does not recommend altering side plates, tie straps or rivets on the saw chain.
- Prior to the competition the organisation will complete a technical check (visual check, running saw, switching off) done by saw technician or Judge on each Athlete's Hot Saw.
- Each Athlete is allowed to register a maximum of two Hot Saws to the competition.
 - In instances where the event organizer provides Hot Saws for competition the Athlete must indicate that they want to use a provided Hot Saw during the technical check.
- Starting a Hot Saw outside of designated times or areas could result in a penalty (disqualification or sportsmanship).
- At any time the starter cord must remain within an area which will be defined by the radius of the tether or the area as defined by the chainsaw screens, whichever is larger. For the official start a starter cord tether, provided by the organisation, will be used for saws that have detachable starter cords. If a second starter cord is necessary, a tether is not required however the starter cord must remain within the safe area (described above) or it will result in a disqualification.

1.4.2 Intermediate Hot Saw

- The MS881 will be provided by the organisation.
- The Athletes need to be able to carry the saw by themselves.



2. Trophy

Unless specified here all other STIHL TIMBERSPORTS® rules will apply. The competition format for the Trophy is explained in chapter 3.7.

Disciplines will be completed by an individual competitor in the following order: Stock Saw, Underhand Chop, Single Buck and Standing Block Chop.

Discipline	Diameter
Stock Saw	40 cm
Underhand Chop	32 cm → 28 cm after top sawn off
Single Buck	40 cm
Standing Block Chop	27cm

2.1 General Rules

- As soon as the Athletes are on stage they have 1:00 minute to place their Axes, Single Buck and to put on their eye and ear protection. The Judge will announce “30 seconds” and blow the whistle after 1:00 minute. At this point the Judge will announce the warmup period for the Stock Saw event and proceed with the official starting cadence.
 - Athletes are allowed to mark their blocks backstage prior to their heat.
 - The blocks can be placed on stage by the crew if the event organizer requests it.
 - Helpers are allowed only to carry Single Bucks on or off the stage. Any other action or assistance by the Helper may result in a disqualification.
- No appeals will be allowed. Judges decisions are final.
- Rule infractions will result in a disqualification.
- If a contestant has not finished at the two-minute mark the Judge will stop the competition and the contestant will not receive a time for that heat and will be disqualified.
- Tie breakers
 - Ties will be broken using the Stock Saw time achieved during the tied heat.
 - If both Athletes will be disqualified during Stock Saw the times of following discipline(s) will be used until the tie can be broken.
 - If both athletes receive a disqualification in one round, the athlete with the first DQ will be counted as the loser of the corresponding heat. The athlete with the later DQ will win the round.
- Athletes and their equipment must always remain in their half of the stage during the current heat.
 - The equipment must stay on the stage and falling down the stage results in a DQ.
 - The respective side is determined by the competition tree.
 - See 2.6 for more details.



- The placing of equipment needs to be done in a safe manner. Unsafe behaviour or unsafe placing of the equipment can lead to a DQ.
- Two Axes per Athlete are mandatory on the stage during the heat.
 - No Axe boxes will be allowed.
 - If the Axe gets damaged during the Underhand Chop and there is the need for a spare Axe the Athlete has to take the Axe from the Standing Block. After finishing the Underhand the Axe has to be placed securely in the Standing Block or designated wood block again.
- If an Athlete loses control of the Axe and it leaves his hands this will result in a disqualification.
- In case of absence of an opponent the remaining athlete must complete the heat in accordance with the rules.

2.2 Stock Saw

- The Athletes must wear all safety gear (chainsaw pants, ear protection, and eye protection) correctly.
- All Athletes will cut from the right side of the block (when facing block).
- When the cut is completed the competitor must place (not throw/drop) the saw down in its half of the stage and turn it off.
- One complete cut is required.
- The Single Buck saw will be placed in the starting cut (10 cm from the end of the block) and must remain there during the Stock Saw cut.

2.3 Underhand

- All Underhand blocks will have the top sawn off leaving a flat place for competitors to stand, so the blocks will have a diameter of 28cm.
 - No modification of the block by a competitor is allowed.
 - This eliminates the “foothold rule”.
- Prior to and at the completion of the discipline the Axe must rest securely in the wood block designated to hold the Axe.

2.4 Single Buck

- No assistant (e.g. a wedger) will be allowed to assist the competitor.
- No foot blocks will be allowed.
- The competing Athletes are allowed to make a starting cut with a 35cm arc during the 1:00 minute preparation time.
- All competitors will cut from the right side of the block (when facing block)
- The tip of the Single Buck needs to rest on the floor during Stock Saw and Underhand.
- The organisation recommends that all teeth on the handle side of the saw are hidden in the wood during Stock Saw and Underhand.

2.5 Standing Block

- Prior to the heat, the Axe must rest securely in the Standing Block.

STIHL TIMBERSPORTS®

THE ORIGINAL EXTREME SPORT

2.6 Stage Setup

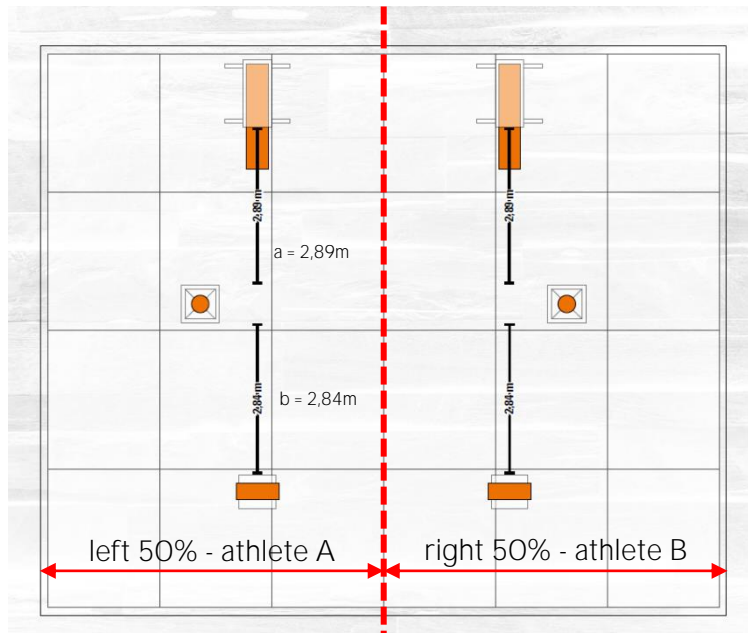
The arrangement of all stands and the competition wood is fundamental for the Trophy format and can't be changed.

The time trial and the "heat tree" decide on which side (A or B) an Athlete competes.

If the stage does not fit the mentioned distances for the stands, alternative setups need to be certified by the international STIHL TIMBERSPORTS® committee.

The below picture shows the setup and distances used at the World Trophy.

- The distance in between the sawing stand and Standing Block stand = $a = 2,89\text{m}$
- The distance in between the Standing Block stand and Underhand stand = $b = 2,84\text{m}$
- The sum of a and b must be in between $5,50\text{m}$ and $6,50\text{m}$.





3. Competition formats

The competition format and order of the disciplines for an official competition must be according to these rules.

The competition and point format must be announced to the Athletes with their invitation to the corresponding competition.

The heat order is programmed in a progressive way based on the athletes' best times from the previous season. In case of a disqualification the times from two seasons before are used. Organisation may change the heat order if organisational needs are given (e.g. Athletes in one heat share a Hot Saw).

It is prohibited that an Athlete competes in two competitions the same day. E.g., a Rookie cannot compete in a Rookie competition and afterwards in a Pro competition.

Information on wood diameters, including starting cuts, is provided in Chapter 6.1, and time limits for each discipline in Chapter 1.1.6.

3.1 Traditional individual competition format

3.1.1 Order of the disciplines

1. Springboard
2. Stock Saw
3. Standing Block
4. Single Buck
5. Underhand Chop
6. Hot Saw

3.1.2 Allocation of points

The maximum points awarded for each discipline results from the number of participating Athletes (e.g. Place 16 = 1 Point, Place 1 = 16 Points). The overall ranking results from the sum of all points per discipline.

If two competitors receive identical times in a discipline each competitor will receive points for the tied place.

A disqualification means 0 points.

3.2 Individual round format

3.2.1 Order of the disciplines

The Individual Round format is a Knock-Out-System based on three rounds. After each round, a number of Athletes will be eliminated from the competition (see following graphic).

If an Athlete reaches the second or third round without having the approval for the corresponding disciplines, it does not allow a worse placed Athlete to move forward.

STIHL TIMBERSPORTS®

THE ORIGINAL EXTREME SPORT

Athletes without approval or without starting in a specific discipline will be rated as DNS (= did not start) and gets 0 points.

Round 1 (12 Athletes)

1. Underhand Chop
2. Stock Saw
3. Standing Block Chop

Round 2 (8 Athletes)

4. Single Buck
5. Springboard

Round 3 (6 Athletes)

6. Hot Saw



3.2.2 Allocation of points

Round 1

In round 1, each of the 12 participating Athletes must compete in Underhand Chop, Stock Saw and Standing Block Chop. 12 to 1 points will be distributed per discipline. Points are summed and the top eight competitors will advance to round 2.

If a competition starts with more than 12 Athletes, only the first 12 placed Athletes will receive points. Athletes finishing higher than 12th place in a given discipline will receive zero points for that discipline. A competition with less than 12 Athletes needs to keep the point structure.

Round 2

The eight competitors that advanced to round 2 will compete in Single Buck and Springboard. First place is worth 16 points, 2nd place is worth 14 points and so on. Points are summed and the best six Athletes advance to Round 3.



Round 3

The six advancing Athletes will compete in the Hot Saw. 18 points will be awarded for 1st place, 15 points awarded for second place and so on.

A disqualification means 0 points.

No matter how many Athletes compete in a competition with the individual round system the point structure stays mandatory.

In case of identical times by more than one Athlete during the same discipline, this will be judged as a tie. All competitors will receive points for the tied place.

Round	1			2		3	aggregated
Place	Underhand	Stock Saw	Standing Block	Single Buck	Springboard	Hot Saw	points
1	12	12	12	16	16	18	86
2	11	11	11	14	14	15	76
3	10	10	10	12	12	12	66
4	9	9	9	10	10	9	56
5	8	8	8	8	8	6	46
6	7	7	7	6	6	3	36
7	6	6	6	4	4	-	26
8	5	5	5	2	2	-	19
9	4	4	4	-	-	-	12
10	3	3	3	-	-	-	9
11	2	2	2	-	-	-	6
12	1	1	1	-	-	-	3

3.3 Rookie and Women competitions

3.3.1 Order of the disciplines

1. Optional: Springboard with one board
2. Stock Saw
3. Standing Block
4. Single Buck
5. Underhand Chop



Athletes have the chance to participate in competitions without competing in all disciplines. Not competing in a specific discipline will be rated as DNS (= did not start) and is equal a disqualification.

Intermediate, Women and Rookie competitions can be combined.

3.3.2 Allocation of points

The maximum points awarded for each discipline results from the number of participating Athletes (e.g. Place 16 = 1 Point, Place 1 = 16 Points). The overall ranking results from the sum of all points per discipline.

A disqualification is worth 0 points.

3.4 Rookie World Championship

3.4.1 Order of the disciplines

Round 1 (12 Athletes)

1. Underhand Chop
2. Stock Saw

Round 2 (8 Athletes)

3. Standing Block
4. Single Buck

Round 3 (6 Athletes)

5. Springboard (with one board)

This format can also be used in any other Rookie competition.

3.4.2 Allocation of points

Round 1

In round 1, each of the 12 participating Athletes must compete in Underhand Chop and Stock Saw. 12 points to 1 point will be distributed per discipline. Points are summed and the top eight competitors will advance to round 2.

Round 2

In round 2 the remaining 8 Athletes compete in Standing Block and Single Buck. Place 1 is worth 16 points and down to 2 points for place 8, decreasing by two points per rank.

Round 3

The last six advancing Athletes will compete in Springboard (with one board). 18 points will be awarded for first place, 15 points will be awarded for second place and so on.

Disqualification = 0 Point



Round Place	1 Underhand	Stock Saw	2 Standing Block	Single Buck	3 Springboard (one board)	Aggregated points
1	12	12	16	16	18	74
2	11	11	14	14	15	65
3	10	10	12	12	12	56
4	9	9	10	10	9	47
5	8	8	8	8	6	38
6	7	7	6	6	3	29
7	6	6	4	4	-	20
8	5	5	2	2	-	14
9	4	4	-	-	-	8
10	3	3	-	-	-	6
11	2	2	-	-	-	4
12	1	1	-	-	-	2

3.5 Intermediate competitions

3.5.1 Order of the disciplines

1. Springboard with one board
2. Stock Saw
3. Standing Block
4. Single Buck
5. Underhand Chop
6. Hot Saw (with MS881 only)

3.5.2 Allocation of points

The maximum points awarded for each discipline results from the number of participating Athletes (e.g. Place 16 = 1 Point, Place 1 = 16 Points). The overall ranking results from the sum of all points per discipline.

A disqualification means 0 points.

3.6 Team competitions

3.6.1 Basics

- In the Team format, a heat is defined by the completion of four disciplines by four different athletes (on per discipline).
- Two teams compete against each other in a heat.



- The Tean Format is a KO-system, which means that a loser of a heat will be eliminated from the competition. The heat tree depends on the number of teams. See examples: [Downloads - STIHL TIMBERSPORTS® Database](#).
- It is not permitted to separate individual rounds and spread them over several days. The competition must always be held on one day.
- The wood draw determines the heat draw for the Time Trial.

3.6.2 Order of the disciplines

1. Stock Saw: Stock Saw must be turned off immediately, once the cut is finished.
2. Underhand Chop
3. Single Buck
4. Standing Block Chop

An Athlete may not start until the Athlete in the previous discipline has finished. Tagging is not required.

All Team members must complete at least one discipline.

Each Athlete must be in a designated safe area before starting their discipline and move to a designated safe area after they have completed their discipline.

3.6.3 Time

- Time Starts: After the start signal.
- Time Stops: When the last hit was made on the Standing Block and the Standing Block is clearly severed or the last hit is made, whichever is later.
- Ties will be broken using the Stock Saw time achieved during the tied heat.
 - If both Teams receive a disqualification during Stock Saw the times of the following discipline(s) will be used until the tie can be broken.
- Time limit: 2 minutes. If a Team exceeds the time limit, no time will be awarded.
- Fifteen seconds will be added to the Teams' times for every rule infraction.

3.6.4 Wood

- Stock Saw and Single Buck: 46cm diameter
 - Each Team will receive 5cm wood to make one Stock Saw cut and each Team will receive 5cm for one Single Buck cut. The starting cut (30cm arc) for the Single Buck will be made on the 10cm mark as designated by the Judge, if the competition is to be run on one stand.
- Underhand Chop: 32cm
 - The tops are sawn off to 28cm.
- Standing Block Chop: 30cm



3.6.5 Team members

- A Team must always compete with four members.
- A Team may have a fifth Athlete as spare Athlete. The spare Athlete needs to be a Rookie or a female athlete.
- Teams who included a Rookie as fifth Athlete in the Team have the permission to bring a sixth Athlete as another spare Athlete. The sixth Athlete can be chosen from all divisions (Rookie, Intermediate and Pros).
- Four Athletes will compete in a given heat, and substitutions may be made in subsequent heats.
- Team members are allowed or may be selected from all divisions and genders.
- Team members must be selected from TIMBERSPORTS® competitions if there is a national TIMBERSPORTS® series in the respective country.
 - If there is no national series, a process must be agreed with the Global Sports Directors.

3.6.6 Time Trial

- The Time Trial is mandatory for every Team competition.
- Every team will complete one heat to determine a time for the ranking. This ranking is the base for the first round in the Team competition (e.g. Last Chance or Quarter Final, depending on the number of teams).
- The wood draw determines the Teams seating in the heats of the Time Trial.

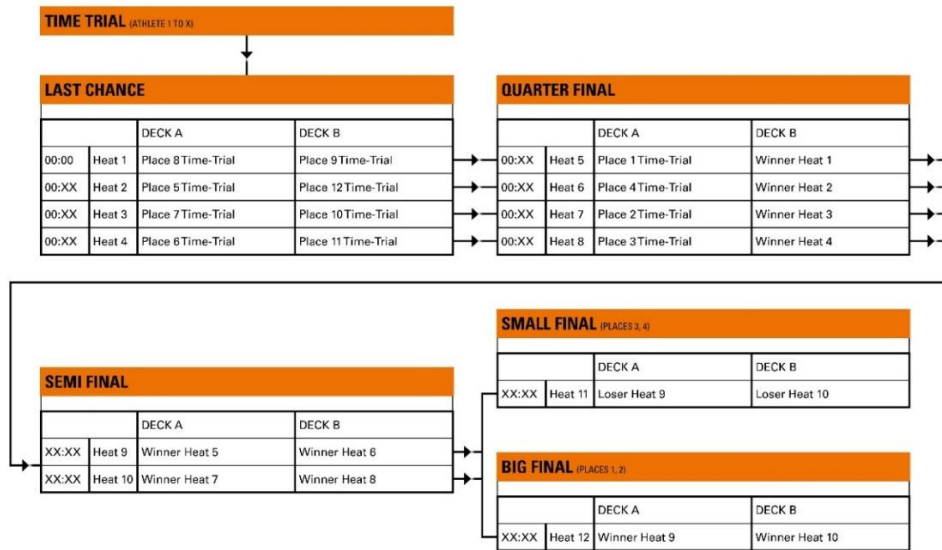
3.7 Trophy format

3.7.1 Basics

- In the Trophy, a heat is defined by the completion of four disciplines.
- Two athletes compete against each other in a heat.
- The Trophy is a KO-system, which means that a loser of a heat will be eliminated from the competition. The heat tree depends on the number of Athletes. See the following rules.
- It is not permitted to separate individual rounds and spread them over several days. The Trophy must always be held on one day.
 - Exceptions may be unforeseeable events, such as a cancellation due to bad weather. In this case, the organisation can find an alternative solution to complete the competition.
- The organisation must ensure that all blocks are marked before the competition and that it is ensured which blocks are used in which heats.
- The wood draw determines the heat draw for the Time Trial.
- The following heat tree describes a possible procedure of the competition during a Trophy competition with twelve Athletes (see other examples: [Downloads - STIHL TIMBERSPORTS® Database](#)):

STIHL TIMBERSPORTS®

THE ORIGINAL EXTREME SPORT



3.7.2 Heat Procedure

During the Trophy Format the Athletes must compete in four disciplines in the following order:

- Stock Saw
- Underhand Chop
- Single Buck
- Standing Block

A discipline needs to be completed before starting the next discipline.

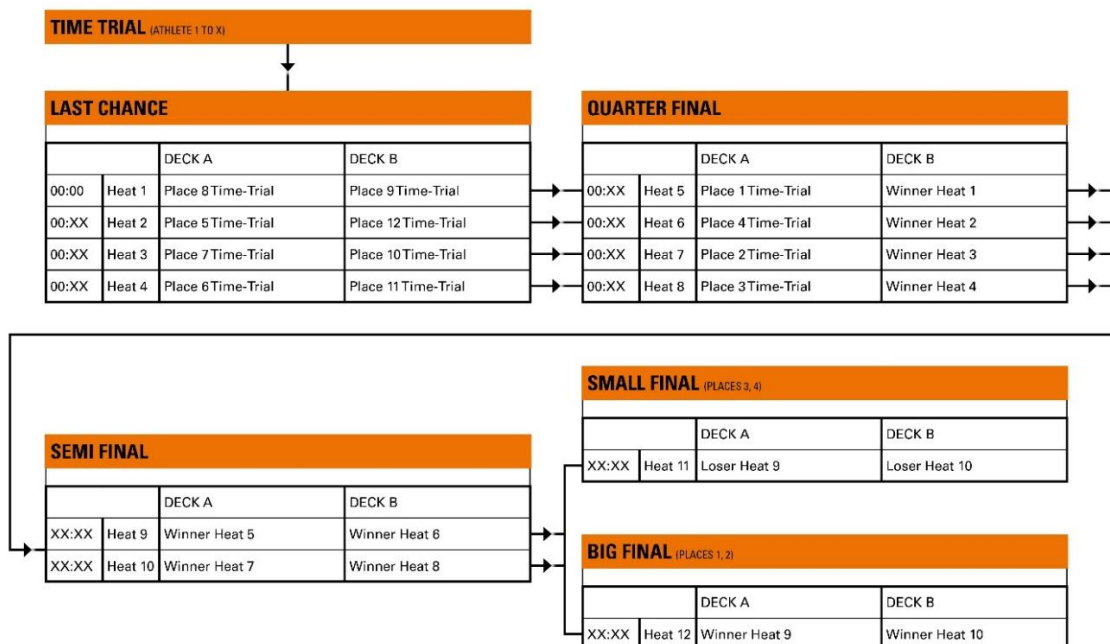
3.7.3 Time Trial

- The Time Trial is mandatory for every Trophy competition.
- Every athlete will complete one heat to determine a time for the ranking. This ranking is the base for the first round in the Trophy (e.g. Last Chance or Quarter Final, depending on the number of athletes). See graphic in 3.7.1.
- The Time Trial can take place the day before the Trophy.
 - In case the Time Trial takes place the same day it requires at least a two-hour break between the Time Trial and the first round of the Trophy.
- The wood draw determines the Athletes' seating in the heats of the Time Trial.
- If during a National Trophy the number of Athletes varies from the described heat tree it needs to be clarified with the international STIHL TIMBERSPORTS® committee.
- If an Athlete needs to compete two heats in a row the organisation should guarantee a minimum of 7 minutes between heats.
- Time limit for a heat = 2 minutes.
- All rule infractions will result in a disqualification.

3.8 Hot Saw Showdown

3.8.1 Basics

- The Hot Saw Showdown is a KO-system, which means that a loser of a heat will be eliminated from the competition. The heat tree depends on the number of Athletes. See following rules.
- It is not permitted to separate individual rounds and spread them over several days. The Hot Saw Showdown must always be held on one day.
 - Exceptions may be unforeseeable events, such as a cancellation due to bad weather. In this case, the organisation can find an alternative solution to complete the competition.
- The wood draw determines the heat draw for the Time Trial.
- For assessment purposes, each heat is structured into the following phases: pre-heat (preparation and warmup), start, disc 1, disc 2, disc 3, and post-heat.
- During Time Trial every rule infraction results into a five second penalty.
- Rule infractions will result in a disqualification during the KO-system.
 - If two athletes are disqualified in the same heat, the athlete whose rule infraction occurred earlier in the heat phases will be disqualified first.
 - If two athletes are disqualified in the same phase, the result is counted as a draw. See Tie Breaker in 3.9.4.
- Only athletes with their own registered Hot Saws can participate in such a competition.
 - Every athlete is allowed to register two Hot Saws per competition.
- The following heat tree describes a possible procedure of the competition during a Hot Saw Showdown competition with twelve Athletes (see other examples: [Downloads - STIHL TIMBERSPORTS® Database](#)):





- If an athlete has to compete in two heats in a row, a minimum break of seven minutes is mandatory.
- The small final to determine the third place is optional.
- Time limit for a heat = 60 seconds.

3.8.2 Heat Procedure

Each heat follows the standard rules for Hot Saw from 1.3.3 and the technical rules from 1.4.1.

3.8.3 Time Trial

- The Time Trial is mandatory for every Hot Saw Showdown competition.
- Every athlete will complete one heat to determine a time for the ranking. This ranking is the base for the first round in the Trophy (e.g. Last Chance or Quarter Final, depending on the number of athletes). See graphic in 3.8.1.
- The Time Trial can take place the day before the actual Hot Saw Showdown.
- The wood draw determines the Athletes' seating in the heats of the Time Trial.

3.9 Tie Breakers

3.9.1 Individual format for Pros, Intermediate, Rookies and female competitions

- All point ties will be broken by summing times for all disciplines.
- If two competitors receive identical times in a discipline each competitor will receive points for the tied place.
- A disqualification will be worth 180 seconds.

3.9.2 Team

- Ties will be broken using the Stock Saw time achieved during the tied heat.
- If both Teams are disqualified during Stock Saw the times of following discipline(s) will be used until the tie can be broken.

3.9.3 Trophy format

- Ties will be broken using the Stock Saw time achieved during the tied heat.
- If both Athletes will be disqualified during Stock Saw the times of following discipline(s) will be used until the tie can be broken.
- If both athletes receive a disqualification in one round, the athlete with the first DQ will be counted as the loser of the corresponding heat. The athlete with the later DQ will win the round.

3.9.4 Hot Saw Showdown

- Ties will be broken by using the times achieved in the Time Trial.



3.10 Best Axe / Saw Man / Woman

The organisation may award a prize for the best Axe / Saw Man and Woman in a competition: The prize is determined by adding the times of the respective Athlete from the associated competition.

3.11 Gender

All formats are independent of the Athlete's gender. All genders are allowed to compete in all formats if the status (Pro, Intermediate, Rookie) meets the competition requirements.

An exception are Women competitions: only Athletes of female gender are allowed or if an Athlete can respect the regulations of the IOC. It is the responsibility of the Athlete who wants to compete in the Women's category to prove that the rules of the IOC are respected.

3.12 Levels

3.12.1 Pro

A Pro Athlete is able to compete in all six TIMBERSPORTS® disciplines (Underhand, Stock Saw, Standing Block, Single Buck, Springboard and Hot Saw) with the corresponding Pro wood diameters (6.1.1).

All genders can participate in the Pro Level.

3.12.2 Rookie and Intermediate

The young talents of STIHL TIMBERSPORTS® Series are called Rookies. The following rules apply for the approval of Rookies:

- The ability to master at least one of the following four disciplines within their time limits is a basic requirement: Standing Block, Underhand, Stock Saw and Single Buck.
- The wood diameters for rookies apply (6.1.2).
- The one boarded Springboard and Intermediate-Hot Saw (for Intermediate only) are optional disciplines.
- Athletes need to be under the age of 25
 - 1st January is the cut-off date for age.
 - Rookies over the age of 25 are called Intermediate (with Intermediate wood diameters: 6.1.4).
- Athletes must not have competed in all six TIMBERSPORTS® Pro-disciplines.

3.12.3 Female Pro

A female Pro Athlete can compete in four TIMBERSPORTS® disciplines (Underhand, Stock Saw, Single Buck and Standing Block) with the corresponding wood diameters (6.1.3) for females.

- Only female athletes are allowed to take part in these competitions.
- It is possible to mix all female levels in one competition.



3.12.4 Female Rookie and Intermediate

Rookies and intermediates cannot perform the standing block.

The difference for Rookie and Intermediate is due to age:

- Rookie: under 25 years old
- Intermediate: over 25 years old
- Only female athletes are allowed to take part in these competitions.
- It is possible to mix all female levels in one competition.



4. Qualification systems

4.1 National Championships

Athletes can't be nominated to the National Championship. A fair qualification system approved by the international STIHL TIMBERSPORTS® committee must be in place.

4.2 Individual World Championship

If a STIHL TIMBERSPORTS® National Championship takes place in a country, the result determines which national representative is going to the World Championship.

A qualifying competition for the World Championship is valid only, if at least two approved Judges run the competition and the used video- and timing-system is approved (as defined by 7.1) by the international STIHL TIMBERSPORTS® committee. National Championships which shall qualify for the World Championship need to use the Individual Round Format (2.6).

If a nation doesn't provide a national championship or if a nation doesn't fulfil the international standards, the Athletes from this specific nation are allowed to compete once in another nation's series which fulfils all criteria. These Athletes will not be counted in the official rankings of the respective national championship, but the times count for the European Ranking, personal bests and records. Therefore, an approval by the international STIHL TIMBERSPORTS® committee is needed.

4.2.1 Host country, Australia, New Zealand and North America

The World Championship's host country's champion and the national champions from Australia, Canada, New Zealand, and the USA are directly qualified for the World Championship. This rule does not allow the personal qualification of an Athlete, but only the qualification of a nation. Therefore, only one national champion per nation can qualify.

4.2.2 Europe

The remaining seven spots will be allocated to the remaining national champions in Europe. If there will be more than seven national champions, the [European Ranking](#) will determine the qualified Athletes: Therefore, the international STIHL TIMBERSPORTS® committee will distribute points based on the times achieved at national championships. To get into the mentioned ranking it is obligatory to use central wood.

Nonparticipation of Athletes

If a qualified Athlete is not able to participate in the World Championship, the second placed Athlete from this nation will be ranked in the qualification ranking. The ranking will determine who will qualify for the World Championship. In case of the host country, Australia, Canada, New Zealand and the USA the second placed Athlete from that nation will qualify. This must be approved by the international STIHL TIMBERSPORTS® committee.



If a National Champion is not able to attend the Individual World Championship, he is automatically excluded from the Team World Championship.

4.3 World Trophy

The participants of the World Trophy will be structured as follows:

- Four Athletes from following countries
 - Australia
 - Canada
 - New Zealand
 - USA
- Six Athletes from Europe
 - minimum from four different countries
 - maximum two Athletes from the same country
- The international STIHL TIMBERSPORTS® committee can define a maximum of three wildcards
 - One wildcard for the host country
 - For the competition in its country only
 - Host country will be placed at least in 1/8 Finals
 - Also the host country Athletes need to prove that they can compete in the Trophy system
 - For two Athletes of a maximum age of 25.

If an Athlete cannot participate at the World Trophy, the next placed individual of the previous Qualifier will proceed automatically. If the host country's Athlete can't participate at the World Trophy, the next ranked Athlete from the Time-Ranking or national Trophy will qualify.

For all national Trophies the general Trophy rules will apply.

4.3.1 Australia, New Zealand and North America

The winner of the respective national Trophy (e.g. Australian Trophy or Canadian Trophy) will participate at the World Trophy. If an overseas country doesn't have a national Trophy the following selection process will apply: The times for Underhand Chop, Single Buck, and Standing Block at the national championship will be summed and the Athlete with the best time goes to the next year's World Trophy.

4.3.2 Europe

European Athletes must compete in the European Trophy to qualify:

- The European Trophy is a competition with a classic KO System (e.g. round of 16, quarterfinal, semi-final, final).
- Each European country can send two Athletes to the European Trophy.
- Countries must select by organizing their own National Trophy (e.g. French Trophy). The top two finishing athletes (finals) will automatically qualify for the European Trophy in the corresponding season.



- In case a national Trophy is not being held, nations need to provide a video (uncut video from the start of the first heat until the end of the second heat) to the international STIHL TIMBERSPORTS® committee, which proves the ability of the competing Athletes to complete two heats under two minutes within 14 minutes.
 - Heat 1
 - 10 minute break
 - Heat 2
 - The second heat starts with the ending of the 10 minutes break. The heat preparation must be done by the Athlete before the 10 minutes end.

4.4 Rookie World Championship

The seven best European Athletes (one per nation) and the best Athlete from Australia, Canada, New Zealand, USA and the host country, who qualify as a Rookie, shall compete in the Rookie World Championship. In total 12 Athletes are qualified for the Rookie World Championship.

Age: Competitors must be under the age of 25 at the point of qualification. (more information about the age in definition part 9). - This rule only applies if the qualification took place in the same or previous year. In other cases, a fair and individual solution must be sought together with the International STIHL TIMBERSPORTS® committee.

Level: Competitors must have the Rookie status in the season, which is relevant for the qualification to the Rookie World Championship.

- If an athlete changes his level to a Pro during the relevant season for qualification he or she will lose their qualification slot.
- If an athlete should compete in all six disciplines during the same season as the Rookie World Championship he/she will not lose their slot. This rule can overrule the previous bullet point.

In total Rookies are allowed to compete twice in a Rookie World Championship. Athletes who win the Rookie World Championship are not allowed to compete a second time in a future Rookie World Championship. - This rule does not apply for athletes who are under 18 years old and therefore are not allowed to do all six disciplines.

If an Athlete is not able to participate at the Rookie World Championship the next placed Athlete of the previous National Rookie Championship/ European Rookie-Ranking will proceed automatically. If the host country's Athlete can't participate at the Rookie World Championship, the next ranked Athlete from the host county will qualify.

4.4.1 Australia, New Zealand and North America

The winner of the corresponding national series will be invited to the Rookie World Championship.

4.4.2 Europe

The [European Rookie Ranking](#) determines the participants for the Rookie World Championship. The ranking is based on the total time by adding up the times of Stock Saw, Standing Block Chop, Single Buck and Underhand Chop from the best competition result from the corresponding Athlete - a DQ or DNS is worth 180 seconds. If competitions



with more than four disciplines take place during a season, the times of the additional disciplines do not count into the ranking.

If Athletes want to be ranked in the European ranking, they need to participate at one (or more competitions), which use central wood and an approved video- and timing-system. The registration can be done via the representatives in the STIHL TIMBERSPORTS® countries.



5. Organisational rules

5.1 Appeal Process for Athletes

- If an Athlete disagrees with the Judge's rule interpretation, they can appeal the call by asking a member of the advisory group/ Athletes' jury to make an appeal to the Judge.
- Only Athletes can make appeals. Assistants, helpers, trainers, etc. cannot bring an appeal to the Judges attention.
- Appeals will only be allowed for rule interpretation issues or for issues not covered in the rules.
- Appeals must be brought to the Judges attention no later than 5 minutes after the end of the heat.
- No appeals can be made on judgment calls. For example: jumping the gun, blocks not severed, cut foot holds, cut lines, incomplete disks or wrenching.
- If the Judges are unsure about a rule interpretation they may ask for the advisory groups' / Athletes' jury input.
- The event organizer may offer "appeal cards".
- Present Global Sports Directors can act as advisory groups'/Athletes' jury input.
- In doubt the Judges team will always decide in benefit for the athlete who's performance is in question.
- Every Athlete has one appeal per competition.
 - If the appeal was accepted, he/she gets another appeal.
 - If the appeal is not accepted, he/she loses the possibility to make another appeal.
- It is permitted to raise an appeal against the performance of other athletes or for an action overlooked by the Judges team.

5.2 Judges' Review

While every effort is made to ensure stage announcements are accurate, they may be subject to further review. In the instance that contradicting evidence is observed following an official announcement, a Judges Review may occur. This action must take place within 5 minutes of the initial decision.

5.3 Assistants and Helpers

- Athletes have the possibility to register an Assistant or Helper (see chapter 9 Definitions) for a competition within an announced deadline. If there is no Assistant/Helper noted until the mentioned date, the Athlete will not have any Assistant/Helper at his disposal.
- If it's not agreed in a different way by the event organizer, an Athlete/ Team is allowed to have only one Helper in the defined backstage area.
- Any non-approved person is not allowed to be a Helper or an Assistant.
- If a Helper or an Assistant breaks any rules, the correspondent Athlete or the correspondent Team will be disqualified or penalized.
- If an assistant is allowed to support an Athlete during a running discipline this is mentioned in the discipline rules.
- Any time a Helper or an Assistant goes on stage during a competition they have to wear appropriate attire approved by the event organizer. The event organizer may provide bibs or shirts.



- The rules for Helpers and Assistants can differ from different competitions. If in the competition information it isn't mentioned, the rule above will apply automatically.

5.4 Eligibility

To participate at the STIHL TIMBERSPORTS® Series, Athletes have to be of legal age or need to have the written approval of their legal guardians.

5.4.1 The minimum age of an Athlete using an Axe or a Single Buck

- Is older than
 - Europe: 18 years or 14 years with the permission of the legal guardians
 - USA and Canada: 18 years
 - In any other country the age must be authorized by the national STIHL TIMBERSPORTS® representative.

5.4.2 The minimum age of an Athlete using a chainsaw

- Is older than
 - Europe: 18 years or 16 years with the permission of the legal guardians
 - USA and Canada: 18 years
 - In any other country the age must be authorized by the national STIHL TIMBERSPORTS® representative.

5.4.3 Athletic Eligibility

An Athlete's eligibility and ability to compete in a safe manner must be confirmed by an independent coach during an official training camp or by documented evidence that they have competed in other logger sports competitions in each STIHL TIMBERSPORTS® discipline.

An official Judge may prevent an Athlete from competing if he deems that the Athlete is incapable of competing in a safe manner. This can occur prior to or during competition.

To get information about the athletic eligibility please contact the STIHL subsidiary in the specific country.

5.4.4 Non eligible Athletes

Athletes may not be allowed to compete if they are involved with the organisation of a competition, wood supply, video-/ timing-system, etc. Exceptions can be approved by the international STIHL TIMBERSPORTS® committee.

5.5 Dress Code

5.5.1 General

- Following rules apply to all mandatory dates and official meetings, stage activities and competitions.
- Athletes must wear long pants (solid black), shirt, and closed-toe shoes.
- Belts and braces/suspenders must be solid black.



- Athletes will be issued competition clothing (shirts and/or pants) specific to each competition (submit size on Athlete Application form).
- Athletes are required to wear the competition shirt during qualifying and competition.
- If Athletes want to wear a long-sleeved shirt underneath their jerseys the shirt has to be white or black.
- During a national championship, all Athletes will be assigned a number that must be worn in a clearly visible location on the right or left leg.
- Helpers and Assistants must wear long pants (solid black), shirt, and closed-toe shoes.
- Helpers and Assistants in Single Buck on stage must wear completely black clothes.

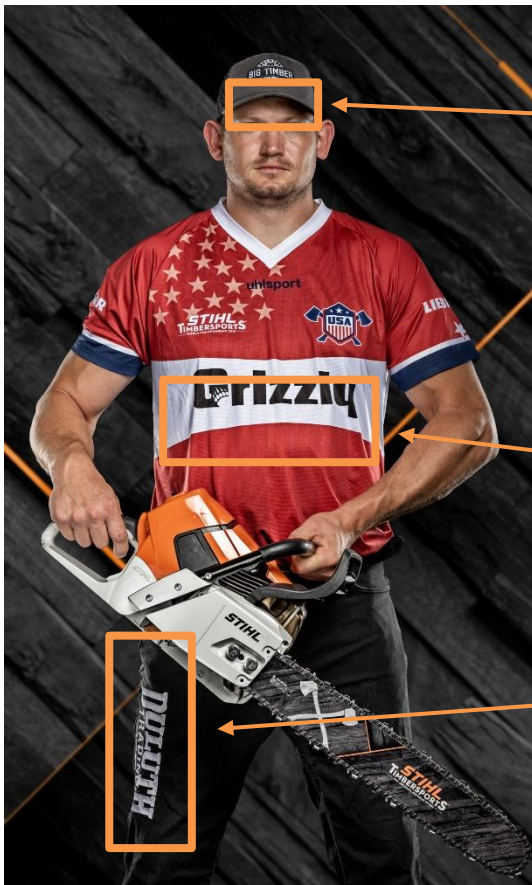
5.5.2 Sponsor logos

Following sponsor rules apply any time to TIMBERSPORTS® events and competitions

- Athlete's individual sponsor(s) have a specific location for placement on the competition shirt.
- Personal sponsoring for Athletes and Teams needs to follow specific announcements of a certain event and could vary at event.
- No clothing or other items that bear the logos, marks, or other product identification of products competitive to STIHL or STIHL TIMBERSPORTS® Series' sponsors, or any apparel deemed to be inappropriate may be worn by an Athlete. STIHL officials and other involved sponsors reserve the right to determine at any time what is considered to be "competitive" or "inappropriate".
- Breaking sponsoring rules can result in a complete reduction of prize money.
- The specific sponsor rules may vary from each competition. The organizer will announce in advance.

STIHL TIMBERSPORTS®

THE ORIGINAL EXTREME SPORT



1 x individual
sponsor
max. 150 cm²

1 x individual /
team sponsor
max. 900 cm²

1 x trousers left or
right
max. 600 cm²



National competitions (the total surface is determinant)

- Coloured logos
 - 1 x jersey (chest, max. 900 cm²) area at the chest
 - 1 x cap (max. 150 cm²)
 - 1 x Hot Saw bar
 - 1 x backside of Springboard (max. 300 cm²)
- Black and white logos only
 - 1 x left or right shoulder (max. 150 cm²)
 - 1 x trousers left or right (max. 600 cm²)
 - 1 x Single Buck

International competitions (the total surface is determinant)

- a maximum of two different sponsors
- coloured logos allowed
 - 1 x jersey (chest, max. 900 cm²) area at the chest
 - 1 x cap (max. 150 cm²)

LIEBHERR

uhlsport

JL
JACQUES LEMANS



- 1 x trousers left or right (max. 600 cm²)
- 1 x Hot Saw bar
- 1 x backside of Springboard (max. 300 cm²)
- Black and white logos only / embossed
 - 1 x Single Buck

5.6 Mandatory Dates: shootings and media dates

As part of a competition, the event organisation will organize mandatory dates for Athletes and Assistants/Helpers. In addition to any dates in context to the sport (e.g. wood preparation, safety briefings, Hot Saw check-up, etc.), there will also be obligatory photo or video sessions and/or meetings with the press.

The event organisation will inform Athletes prior to an event about all mandatory dates. If Athletes do not attend on time this may result in an exclusion from the competition by the event organizer.

5.7 Citizenship

A competitor must be a citizen holding a valid passport of the country they wish to represent and/ or compete in a national championship must be a permanent resident for at least three years. Should an Athlete wish to compete for a different country he must send an application to the international STIHL TIMBERSPORTS® committee for approval.

5.8 Organisational Competition Rules

5.8.1 On Deck Area

Every Athlete needs to be in the defined Athletes waiting area (“on-deck area”) before their heat. When the Judge (or another responsible person), who is responsible for the on-deck area, is giving the signal, the Athlete needs to move onto the stage immediately. If the Athlete is not within the on-deck area on time, and therefore is late on stage, this can result in immediate disqualification within the discipline by the Judge team.

Only Athletes participating in the next heat are allowed to be in the on-deck area during the whole competition. Staying in the security area in front or besides the stage is also not allowed for the whole competition.

5.8.2 After a Heat

As soon as all Athletes/ Teams have finished their heat, they will gather in a defined zone (“decision zone”) until the Judge has declared that the heats are valid, informs about a disqualification, or announces which Team is proceeding to the next round.

5.9 Safety Distances

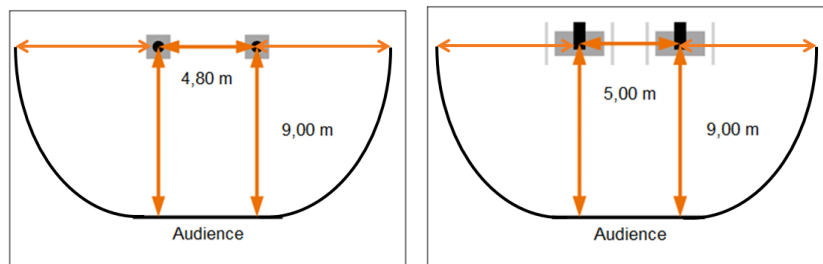
All distances are minimum requirements for any TIMBERSPORTS® event, including competitions, training camps, shows, wood preparation, and media events (also by third parties such as TV show productions, athlete interviews, press conferences, etc.).

Standing Block, Underhand and Springboard

- 4.8 meters (15.7 feet) minimum safety distance to the middle of the next stand (if athletes compete on stands next to each other).
- 9 meters (29 feet) minimum safety distance to audience and timers (from middle of the stands)

Sawing disciplines

- 5 meters (16.4 feet) minimum safety distance to the middle of next stand (if athlete compete on stands next to each other).
- 9 meters (29 feet) minimum distance to audience and timers (from the middle of the stands).
- Safety shields for hot saw during technical check and competition (back and front of saw).





6. Wood

6.1 Wood Diameters

All wood diameters are obligatory. The competition organizer will inform the Athletes in time about the used wood species during the competition.

Diameter tolerance +/- 1.0% (measured in the cutting area of the block).

6.1.1 Individual Pro Competitions

All wood for the disciplines will be round wood in the following diameters:

Discipline	Diameter
Springboard Height: 2,74m	27 cm
Standing Block Chop	30 cm
Underhand Chop	32 cm
Stock Saw	40 cm 10 cm width to make the cut
Single Buck	46 cm 4 cm width to make the cut 30 cm starting cut arc
Hot Saw	46 cm 15 cm width to make the cut

6.1.2 Rookies

Discipline	Diameter
Standing Block	27 cm
Underhand Chop	30 cm
Single Buck	40 cm 4 cm width to make the cut 25 cm starting cut arc
Stock Saw	40 cm 10 cm width to make the cut



6.1.3 Female

Discipline	Diameter
Standing Block	25 cm
Underhand Chop	27 cm
Single Buck	40 cm 4 cm width to make the cut 25 cm starting cut arc
Stock Saw	40 cm 10 cm width to make the cut

6.1.4 Intermediate

Discipline	Diameter
Springboard Height: 1,80m	27 cm
Standing Block Chop	27 cm
Underhand Chop	30 cm
Stock Saw	40 cm 10 cm width to make the cut
Single Buck	40 cm 4 cm width to make the cut 25 cm starting cut arc
Hot Saw	40 cm 15 cm width to make the cut

6.1.5 Trophy Format

Discipline	Diameter
Stock Saw	40 cm 10cm width to make the cut
Underhand Chop	32 cm 28 cm after top sawn off
Single Buck	40 cm 35cm starting cut arc
Standing Block Chop	27 cm



- The organisation must ensure that all blocks are marked before the competition and that it is ensured which blocks are used in which heats.
- The wood draw takes place through the heat draw for the Time Trial and the resulting heat distribution.

6.1.6 Team

Discipline	Diameter
Stock Saw	46 cm 5 cm width to make the cut
Underhand Chop	32 cm 28 cm after top sawn off
Single Buck	46 cm 5 cm width to make the cut 30 cm starting cut arc
Standing Block Chop	30 cm

- The organisation must ensure that all blocks are marked before the competition and that it is ensured which blocks are used in which heats.
- The wood draw takes place through the heat draw for the Time Trial and the resulting heat distribution.

6.2 Spare Blocks and Straight Cuts

If an Athlete feels that their block is not cuttable they may notify the Judge and a spare block may be provided or a straight cut will be done (the decision to change the block remains with the Judge).

Once the exchange is made the Athlete may not choose to cut the original block.

6.3 Drawing for Wood

Each Athlete's wood will be randomly drawn by contest officials or Athletes.

6.4 Test Wood

- **The organisation may provide test wood for Axe disciplines and Single Buck to every athlete.** This wood is only for testing and not for competing.
- The use of test wood, testing equipment or training outside of designated schedules and/ or areas (including event side) will result in a disqualification. Furthermore, all appropriate safety equipment must be worn during wood testing.
- The test wood may only be used by the respective athlete (this also excludes coaches, helpers and assistants). A rule break can result in a maximum penalty of a DQ.



6.5 Markings for wood

For the competitions, the blocks for the different disciplines are colour-coded as follows by the production crew:

- Underhand Chop: green
- Standing Block: red
- Springboard: blue
- Test wood: black



7. Timing

7.1 Video and Timing System

7.1.1 Timing-System

In the STIHL TIMBERSPORTS® Series systems used for time keeping during the competitions are called Timing Systems.

Only timing devices approved by the international STIHL TIMBERSPORTS® committee may be used. All systems deviating from the reference system must be checked for accuracy and precision by the international STIHL TIMBERSPORTS® committee.

- All timing impulses must be recorded as time-of-day format to at least 1/1000th (0.001) seconds precision on dedicated timing systems. During any competition, these impulses must be sequentially, immediately and automatically recorded to permanent storage or print.
- The Athletes' time is calculated by the mathematical comparison between start and the average finish time of all timekeepers. The measured time is rounded off to 1/100th (0.01) seconds precision to determine the final time.
- The timing system must be able to select other times from the same timekeeper when there are multiple impulses.
- When multiple timing devices are used (e.g. backup or video-timing systems), all times used in the calculation must be from the same system. If the time is calculated for the timing buttons, the start time from the same system which records the times for the timing buttons must be used. If the time for the video-timing system is calculated, the start impulse registered on the same video-timing system must be used.
- All internal clocks of the timing devices must be synchronized within 1 hour prior to the start of a competition as prescribed by the timing device manufacturer using impulse or GPS synchronization. Synchronization is not allowed during competitions.
- The elapsed time must be visible for the Athlete and judge after finishing the heat.

7.1.2 Video-System

- Competition results are only valid as official when a specified video-timing-system is used (see below).
- A Video Timing system must be operated by an official judge or video timing operator to determine times. Video timing operators may review and correct times and can also review the following situations: false start, time limit exceeded, cut foothold, cut the line and incomplete disc. Other situations (e.g. wrenching) must be made by an official Judge.
- In case of doubt, video timing judges or operators should call for a video review with the judges on stage.
- Video timing operators must be instructed and recognized by the corresponding STIHL TIMBERSPORTS® organization.
- Video cameras must record video with a minimum 100 frames per second.
- For each frame, the synchronized timestamp must be recorded.



- The video-timing-system must receive and record the starting impulse.
- Video cameras must have an unobstructed line of sight to the competition stand.
- Every stand must be monitored by at least one video-timing camera.
- Stands must be identifiable on the recorded video.
- The runtime is calculated by the mathematical comparison between start and finish time as recorded by the video-timing-system.
- The video time is used as the Athletes' official times.
- Every heat must be recorded at least from the start until all Athletes are finished or out of time.
- Video recordings must be stored for a period of 12 months after the competition took place.
- Video recordings must be made available to the STIHL TIMBERSPORTS® Committee on request.
- For all sawing disciplines, the warmup period of the saws and preparation time (e.g. incut at Single Buck) must be recorded.
- If no video recording is available for one of the heats in the competition, the Athletes' official times are calculated based on the time registered by the timing buttons. - After all heats in the discipline have finished, the average response time of the timing buttons per stand for the concerning discipline is calculated and subtracted for the heat with the missing video recording.
- If more than 50% of all heats in a discipline have missing or incomplete video recordings, the discipline result is considered unofficial.

7.2 Starting Cadence

- The official starting cadence, downloaded from the STIHL TIMBERSPORTS® database, must be used for all starts: <https://data.stihl-timbersports.com/Resources>
- The starting cadence must trigger an impulse which is registered by all timing devices at the rising edge of "GO" in the audio output of the timing computer, with 1ms accuracy and 1ms precision. The impulse must trigger on the analogue audio signal.
- At least two full-range speakers are placed on stage, directed at the competition stands. The starting cadence must be simultaneously played on both speakers. It is encouraged to include the judge microphone in the mix. All other sounds must be excluded.
- Speakers must be placed such that every stand has at least one speaker within a 10m diameter sphere directed at the Athlete.
- Speakers must be placed symmetrical, providing equal distance between the speaker and Athlete on all stands.
- Sound level on all speakers must be equal.

7.2.1 Axe disciplines and Single Buck

Time starts with the word "Go" and stops when (the last hit was made by the cutting edge of the Axe) and the block is clearly severed.



- The leading Judge proceeds in the following way:
 - Whistle
 - “Athletes ready!”
- Afterwards the Judge will start the tape recorded Start Cadence.
- Tape recorded cadence
 - “Stand to your timber!” (by tape)
 - “3-2-1-GO!” (by tape)

If the Judges blow the whistle for a second time all Athletes need to stand down.

Do not touch the block until the Judge has determined that the block is completely cut.

7.2.2 Stock Saw, Hot Saw, Trophy and Team Format

Time starts with the word “Go” and stops when (the last hit was made by the cutting edge of the Axe and) the block is clearly severed.

- The leading Judge proceed in the following way:
 - Whistle
 - “Warmup your saw!”
 - Hot Saw only: “30 seconds warning!”
 - “Athletes ready!”
- Afterwards the Judge will start the tape recorded Start Cadence.
- Tape recorded cadence
 - “Stand to your timber!” (by tape)
 - “3-2-1-GO!” (by tape)

If the Judges blow the whistle for a second time all Athletes need to stand down.

Do not touch the block until the Judge has determined that the block is completely cut.

7.3 Timekeepers

- At least two dedicated timekeepers per Athlete/ Team observe the Athletes’/ Team’s progress, providing an impulse at the end (or during, if interim times needed) of the Athletes’ performance.
- Timekeepers only task is to record times. Timekeepers are not allowed to take Judges’ decision or to be involved into those decisions.
- Backup stopwatches must be available for every timekeeper, completely separate and independent of the electronic timing-system. These stopwatches must be able to record times in 1/100th (0.01) seconds precision. When using backup stopwatches for a competition, the result must be registered as unofficial.



7.4 Records

7.4.1 General Rules for achieving records

A record can only be achieved by an Athlete if the following criteria are fulfilled:

- An official timing-/ video-system according to 7.1
- During the competition, one certified Judge must be present.

The official wood diameters are obligatory during all competitions for reaching records. The type of wood/ species is not relevant for a record.

7.4.2 World Records

World Records can be broken for each level and gender. The official World Records can be found on the [official STIHL TIMBERSPORTS® database](#).

Starting 26th March 2022 the following prize money will be paid by the international STIHL TIMBERSPORTS® committee for breaking world records:

- Team: 2,000 €
- Pro / Trophy / Female (all levels): 1,000 €
- Male Rookie / Male Intermediate: 750 €

7.5 Doping

7.5.1 Doping Rules

Any infraction against the anti-doping rules of the [World Anti-Doping Agency \(www.wada-ama.org\)](http://www.wada-ama.org) will be penalized. The list of prohibited substances and methods can be found on the [WADA Website](#).

7.5.2 Alcohol

The consumption of alcohol or any other illegal drugs for Athletes/ Assistants/ Helpers/ Team Captains is forbidden during the whole length of a competition (also if these persons are eliminated).

7.5.3 Consequences of the violation of anti-doping rules

Any infraction of the rules stated in 7.5 will result in an immediate disqualification from the whole competition.

In the event of a violation of the anti-doping regulations according to 7.5, the Athlete will be disqualified from the rankings and titles he has achieved since committing the violation. Any entry fees, prize money and other trophies (cups, etc.) received must be returned. The Promoter has the right to exclude the participant from competitions/events of the STIHL TIMBERSPORTS® series (or a subsequent series) for up to 2 years in the event of a violation of anti-doping regulations in accordance with 7.5, up to 4 years in serious cases and life-long in repeated cases.



7.5.4 Medication

Athletes under medication must report to the Medic Director (if available) or the Organisation about possible medication prior to the start of the competition. The medicine taken by a specific Athlete will be taken into account in the test results, in compliance with WADA rules.



8. Officials

8.1 Judges

A Judge is the person of authority in the STIHL TIMBERSPORTS® Series who is responsible for presiding over the competitions from a neutral point of view and making decisions that enforce the rules of the sport. All calls by the Judges will be final unless reversed by the Judges during the appeal process or the Judges' review.

- There may be more than one Judge at an event; in this case the Judges will act as a team and every Judge has an equal standing.
- The use of a video review system to determine rule infractions is only allowed by official judges, except for situations as described in 7.1.2 which can also be reviewed by official video timing operators.

All acting Judges in the STIHL TIMBERSPORTS® Series need to be approved by the international STIHL TIMBERSPORTS® committee.

8.2 Global Sports Director(s)

Andrew "Spike" Milton and Nathan Waterfield are the Global Sports Directors (GSD). They are the main contacts for all athletes worldwide. Their job is to represent the athletes' interests and assist the international STIHL TIMBERSPORTS® committee in developing the sport.

As Global Sports Directors, they serve as third-party mediators and advisors between the administration of STIHL TIMBERSPORTS® and the athletes. Their objective is to ensure fairness and safety to the highest standard for all STIHL TIMBERSPORTS® competitions and organized events. The GSDs participate in international planning calls and meetings, receive and relay input from athletes, and work for the overall advancement of STIHL TIMBERSPORTS®, which includes but is not limited to:

- Certification of competition wood for fairness
- Promotion of the understanding of the official rules and regulations
- Serve as a neutral representative for all Athlete Appeals as detailed in the international STIHL TIMBERSPORTS® Rules.
- Confidential grievance acceptance and transmission
- Attend STIHL TIMBERSPORTS® events to assist with on-site activations, and logistical execution.

Only the international STIHL TIMBERSPORTS® is allowed to define national and international Sports Directors.

Like a Judge the Global Sports Directors are completely independent.



9. Definitions

Athletes' jury

Up to three individuals will be selected to represent Athletes for that day of competition. These individuals will be selected during the Athletes meeting. If an Athletes' jury is not selected, appeals will not be allowed.

CCC

Competition Control Center: the place where the competition and the video-/ timing-system is supervised by the video Judge and his crew.

Decision Zone

The decision zone is an area determined by the organisation where Athletes have to stand after the finish of a heat. On the decision zone Judges will announce if the cuts are good or if an Athlete or a Team will receive a disqualification/ penalty for any rule infractions.

DNS

DNS = an Athlete did not start in a specific discipline. A DNS will be handled as a disqualification.

DNF

DNF = an Athlete did not finish in a specific discipline. A DNF will be handled as a disqualification.

DQ

DQ = disqualification

DQed = disqualified

Possible DQs are:

- Dq1: false start
- Dq2: time limit exceeded
- Dq3: block not severed from both sides
- Dq4: cut in footholds
- Dq5: cut the line
- Dq6: incomplete cookie
- Dq7: safety and protection
- Dq8: dropped saw
- Dq9: unsafe behaviour
- Dq10: unsportsmanlike behaviour
- Dq11: wrenching
- The organisation reserves the right to hand out disqualifications due to other rule violations, even if they have not been defined above.

Heat

The time between the start ("Go") and end of discipline (severed block) is called a heat.



Helper

A person who e.g. helps the Athletes backstage, helps to bring equipment on stage. A Helper is not allowed to help the Athlete during the actual discipline.

Judges' jury

This jury will consist of the Judges and selected qualified representatives from the organisation.

Overseas

As overseas are defined Teams or Athletes from following countries: Australia, Canada, New Zealand and USA.

Pinned Axe

For an axe to be considered pinned, the pin shall have passed through the wedge.

Records

As records are counted World records, European records, National records and personal bests.

Slabbing

A slab is defined as a portion of a log that has been split off as a result of an Axe hit which runs to the end of the block.

STIHL TIMBERSPORTS® committee

This committee consists of the Global Sports Directors, the Judges and representatives of the STIHL TIMBERSPORTS® administration.

Striking

A cut or mark is defined as a striking of the block or crushing the fibre, in any manner possible, in the area that is to be cut during the competition.

Tie Breaker

A tiebreaker is used to determine a winner from among Athletes or Teams that are tied at the end of a competition/heat.

Trophy

At the Trophy format the competitors will compete in the following four disciplines in a row: Stock Saw, Underhand Chop, Single Buck and Standing Block Chop. A competition in the Trophy format always uses a knock-out system which can vary depending on the number of competing Athletes.

Wrenching

In the action of severing the log: using the axe handle as a lever, outside of the typical motion of a swing, to break rather than sever the block with the cutting edge.

Yellow Flag

If a Judge throws a yellow flag this is a signal for following cases:

During a heat: Stop competitor during heat. After a heat: that heat is under investigation because of a possible rule infraction.